



US00D826672S

(12) **United States Design Patent**
Strickland

(10) **Patent No.:** **US D826,672 S**

(45) **Date of Patent:** **** Aug. 28, 2018**

- (54) **INSTALLATION ASSIST**
- (71) Applicant: **Michael Wayne Strickland**, Dayton, TX (US)
- (72) Inventor: **Michael Wayne Strickland**, Dayton, TX (US)
- (**) Term: **15 Years**

9,004,421 B2 *	4/2015	Feenstra	A62C 35/68
				248/200.1
9,004,422 B2 *	4/2015	Feenstra	A62C 35/68
				248/200.1
9,725,914 B2 *	8/2017	Strickland	E04F 21/1844
2011/0284098 A1 *	11/2011	Silcox	A62C 35/68
				137/15.18
2015/0259930 A1 *	9/2015	Strickland	E04F 21/1844
				269/309

- (21) Appl. No.: **29/592,129**
- (22) Filed: **Jan. 26, 2017**

Related U.S. Application Data

- (63) Continuation of application No. 14/714,159, filed on May 15, 2015, now Pat. No. 9,725,914, which is a continuation-in-part of application No. 29/421,602, filed on Aug. 21, 2012, now abandoned.

- (51) **LOC (11) Cl.** **08-05**
- (52) **U.S. Cl.** **D8/71**
- (58) **Field of Classification Search**
- USPC D8/71; 269/6, 3, 95, 166-168; 29/261, 29/266, 280
- CPC E04F 21/1861; E04F 21/1844
- See application file for complete search history.

(56) **References Cited**

U.S. PATENT DOCUMENTS

6,904,732 B1 *	6/2005	Richmond	E04F 21/185
				52/127.1
8,453,392 B1 *	6/2013	Hurst	E04F 21/185
				52/127.2

* cited by examiner

Primary Examiner — Lakiya G Rogers
Assistant Examiner — Harold E Blackwell, II
 (74) *Attorney, Agent, or Firm* — Buche & Associates, P.C.; John K. Buche; Scott D. Compton

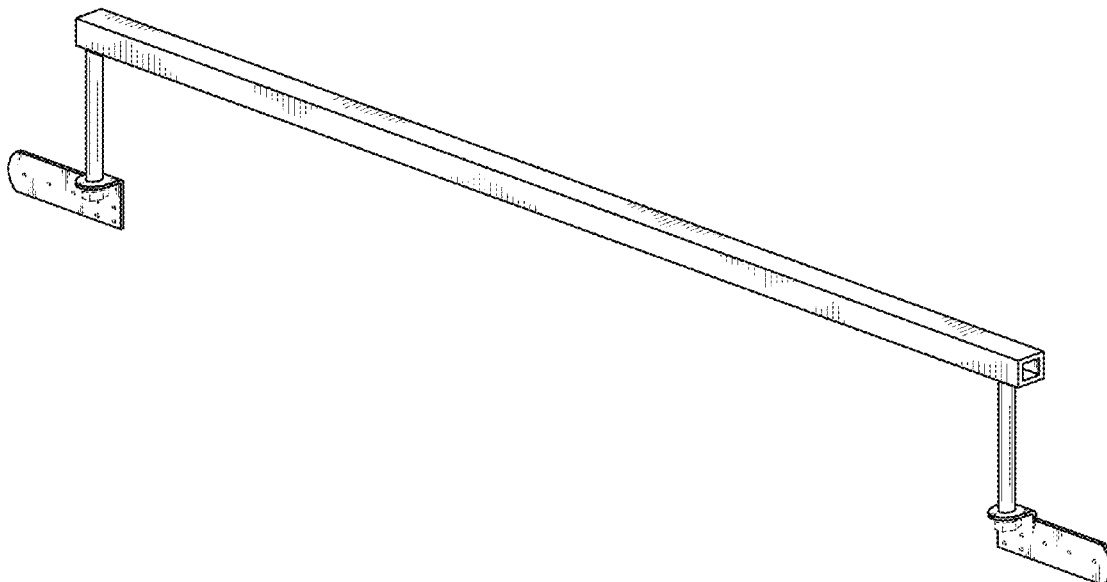
(57) **CLAIM**

The ornamental design for an installation assist, as shown and described.

DESCRIPTION

FIG. 1 is a front perspective view of an installation assist showing my design;
 FIG. 2 is a front view thereof;
 FIG. 3 is a back view thereof;
 FIG. 4 is a right side view thereof;
 FIG. 5 is a left side view thereof;
 FIG. 6 is a top view thereof;
 FIG. 7 is a bottom view thereof; and,
 FIG. 8 is another perspective thereof.
 The broken line showing of the various Figures are for environmental purposes only and form no part of the claimed design.

1 Claim, 4 Drawing Sheets



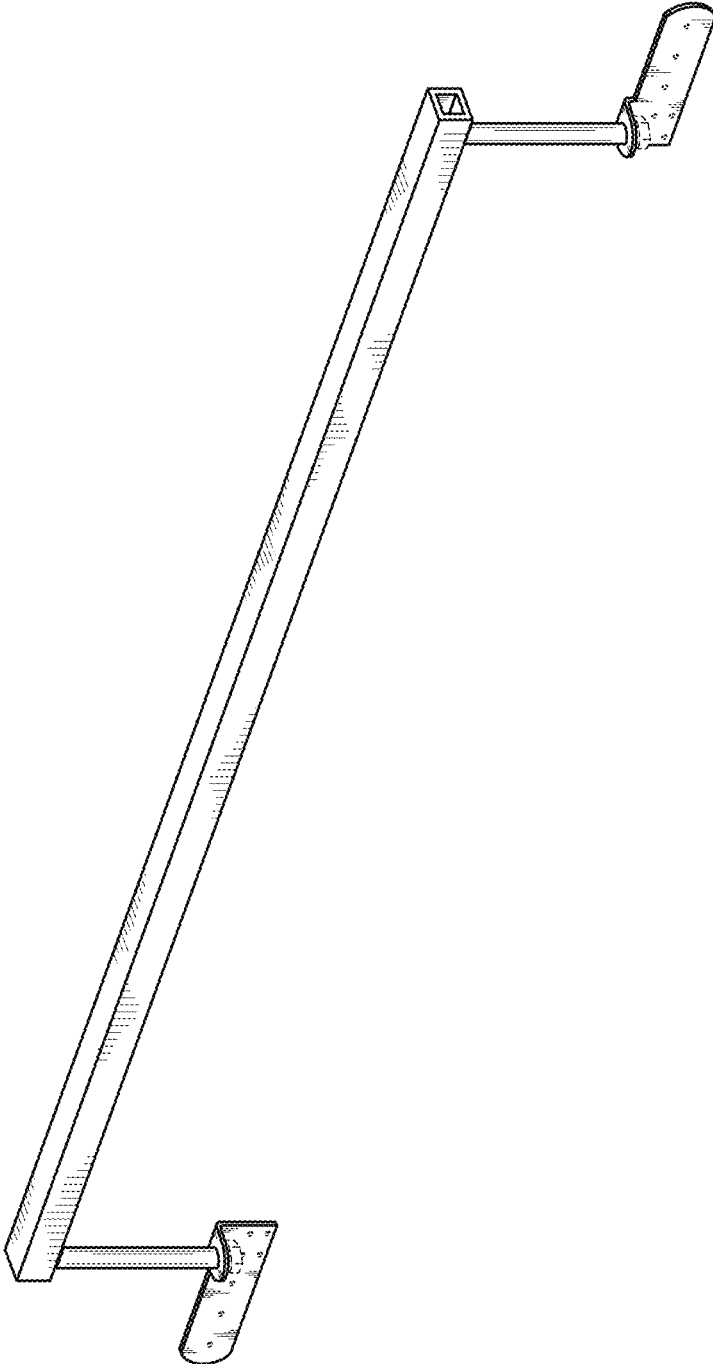


FIG. 1

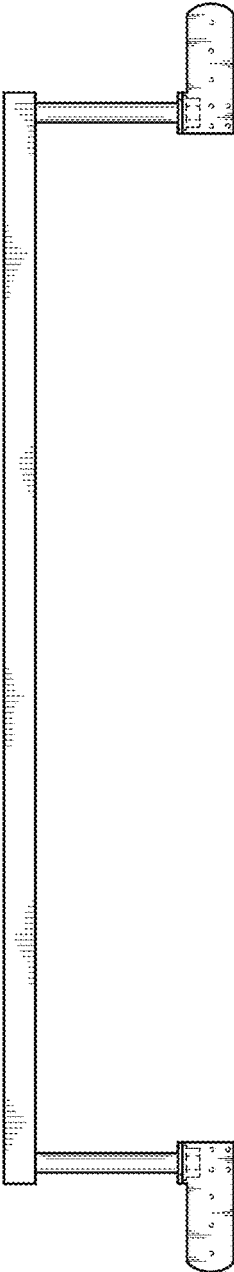


FIG. 2

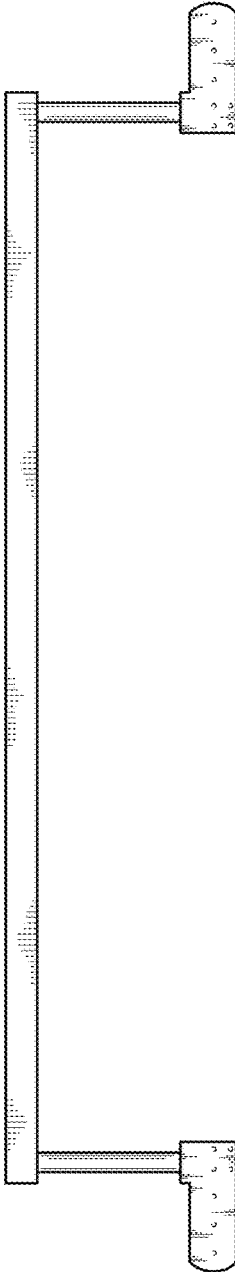


FIG. 3

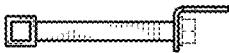


FIG. 4

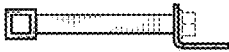


FIG. 5



FIG. 6



FIG. 7

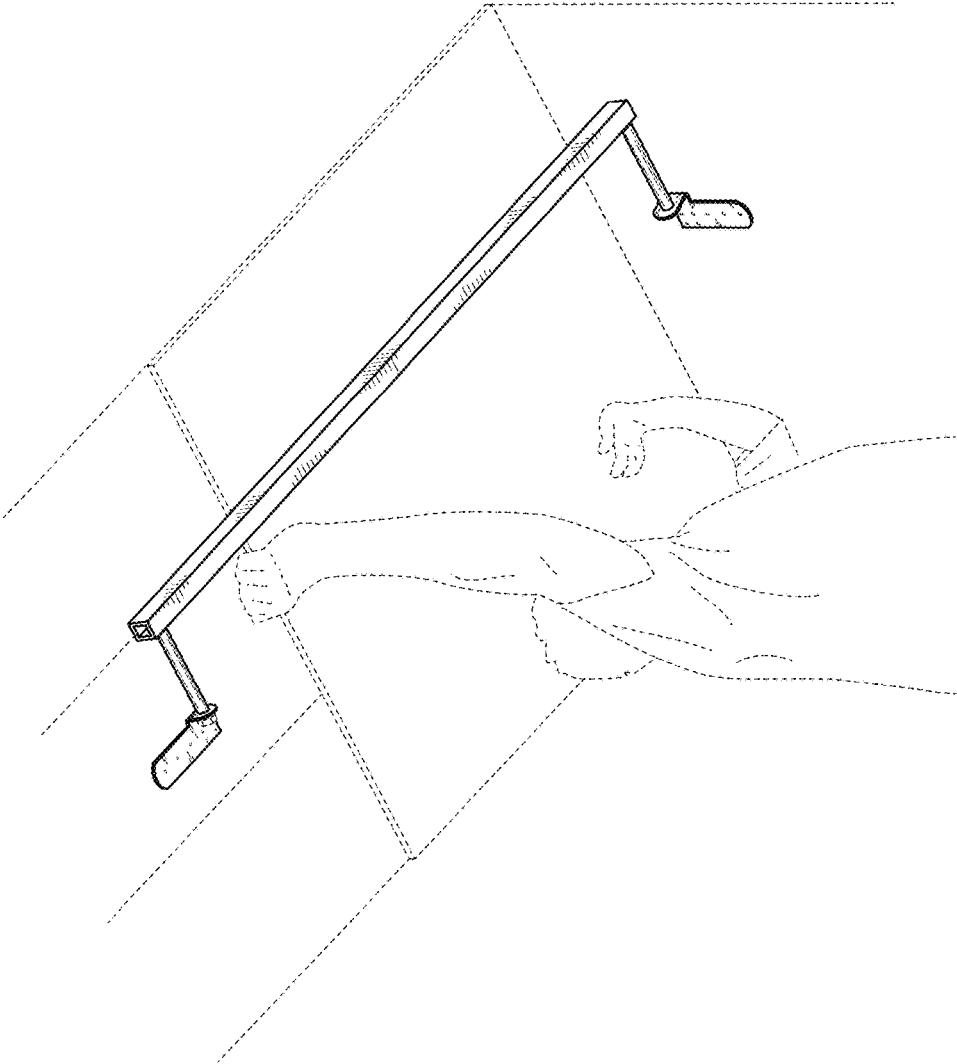


FIG. 8