



US00D670493S

(12) **United States Design Patent**
Campbell

(10) **Patent No.:** **US D670,493 S**
(45) **Date of Patent:** **** Nov. 13, 2012**

- (54) **PROSTHETIC SOCK**
 - (76) Inventor: **Scott Campbell**, Conroe, TX (US)
 - (**) Term: **14 Years**
 - (21) Appl. No.: **29/400,153**
 - (22) Filed: **Aug. 24, 2011**
 - (51) **LOC (9) Cl.** **02-04**
 - (52) **U.S. Cl.** **D2/980**
 - (58) **Field of Classification Search** D2/980-994;
2/239-242, 61, 21; 66/185-187; 36/8.3,
36/93; 623/36
- See application file for complete search history.

6,564,392	B1 *	5/2003	Buckwald	2/239
D494,358	S *	8/2004	Bolby	D2/991
7,316,034	B1 *	1/2008	Berry et al.	2/21
7,363,778	B2 *	4/2008	Pickering et al.	66/178 A
7,726,044	B2 *	6/2010	Gray	36/93
D621,150	S *	8/2010	Kuwabara	D3/29
7,779,483	B2 *	8/2010	Berry et al.	2/21

* cited by examiner

Primary Examiner — T. Chase Nelson
Assistant Examiner — Kathleen M Sims
 (74) *Attorney, Agent, or Firm* — John K Buche; Buche & Associates, P.C.

(57) **CLAIM**
 The ornamental design for a prosthetic sock, as shown and described.

- (56) **References Cited**
- U.S. PATENT DOCUMENTS
- | | | | | | |
|-----------|------|---------|--------------|-------|--------|
| 246,454 | A * | 8/1881 | Bruen | | 66/187 |
| 1,368,255 | A * | 2/1921 | Hall | | 66/187 |
| 1,726,441 | A * | 8/1929 | Loven | | 66/185 |
| 1,889,716 | A * | 11/1932 | Walker | | 2/61 |
| 1,983,914 | A * | 12/1934 | McCann | | 66/70 |
| 2,202,598 | A * | 5/1940 | Peterson | | 623/32 |
| 2,391,064 | A * | 12/1945 | McCandless | | 2/239 |
| 2,412,087 | A * | 12/1946 | Herbert | | 66/187 |
| 2,443,997 | A * | 6/1948 | Town | | 2/61 |
| 2,674,740 | A * | 4/1954 | Kidd | | 2/61 |
| 2,810,214 | A * | 10/1957 | Wolfe | | 36/8.3 |
| 3,334,356 | A * | 8/1967 | Abel | | 2/239 |
| 3,451,232 | A * | 6/1969 | Belzidsky | | 66/171 |
| 3,991,424 | A * | 11/1976 | Prahl | | 602/61 |
| 4,840,635 | A * | 6/1989 | Smith et al. | | 623/36 |
| 6,044,497 | A * | 4/2000 | Richardson | | 2/239 |
| 6,243,868 | B1 * | 6/2001 | Wanzenried | | 2/21 |

DESCRIPTION

FIG. 1 is a perspective view of a prosthetic sock showing my new design;
 FIG. 2 is a front elevational view of the prosthetic sock;
 FIG. 3 is a rear elevational view of the prosthetic sock;
 FIG. 4 is a right side elevational view of the prosthetic sock;
 FIG. 5 is a left side elevational view of the prosthetic sock;
 FIG. 6 is a top view of the prosthetic sock;
 FIG. 7 is a bottom view of the prosthetic sock; and,
 FIG. 8 is a perspective view of the prosthetic sock applied to a below-knee stump of an individual.
 The broken lines of the Figures illustrate environmental structure and portions of the prosthetic sock which form no part of the claimed design.

1 Claim, 5 Drawing Sheets





FIG. 1

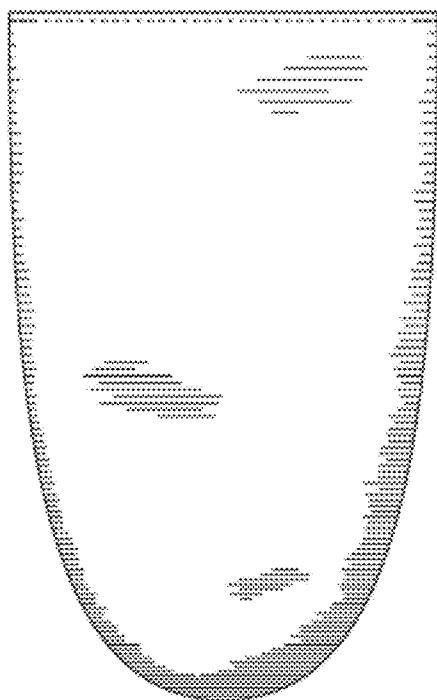


FIG. 2

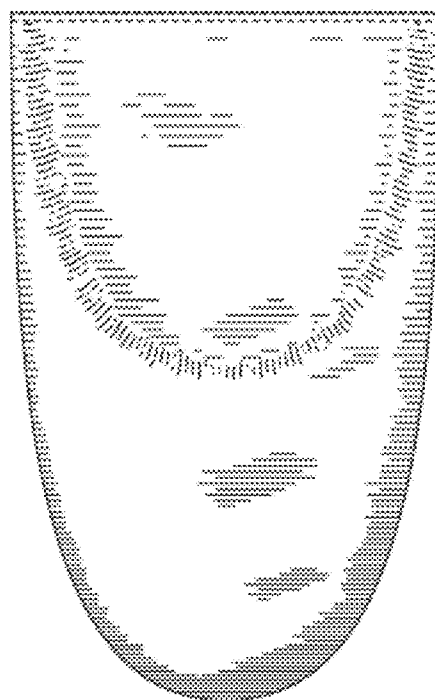


FIG. 3

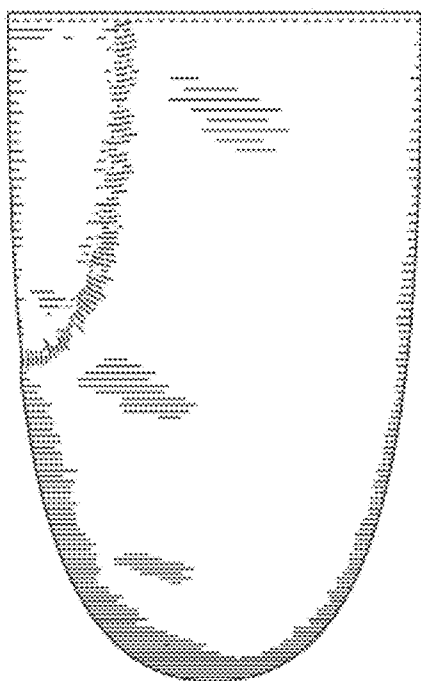


FIG. 4

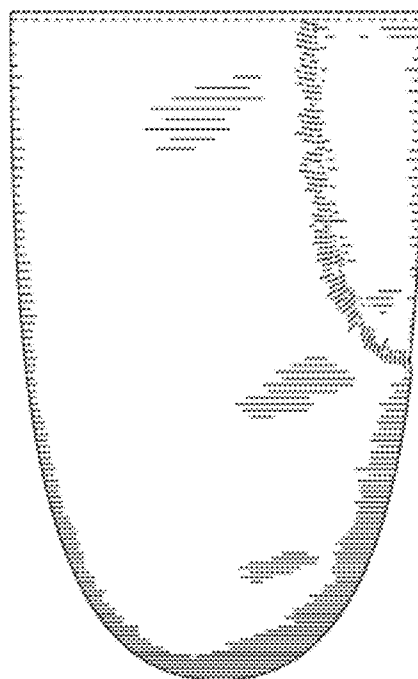


FIG. 5

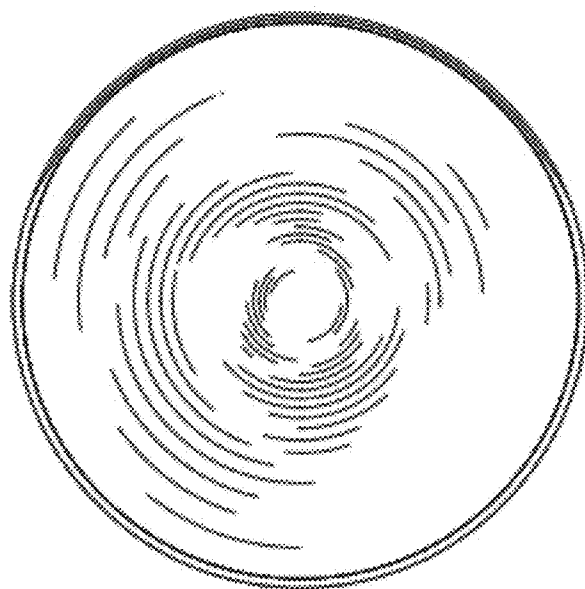


FIG. 6

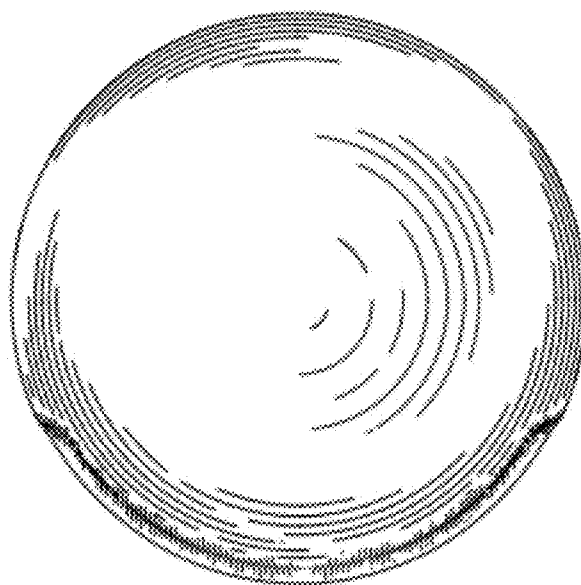


FIG. 7

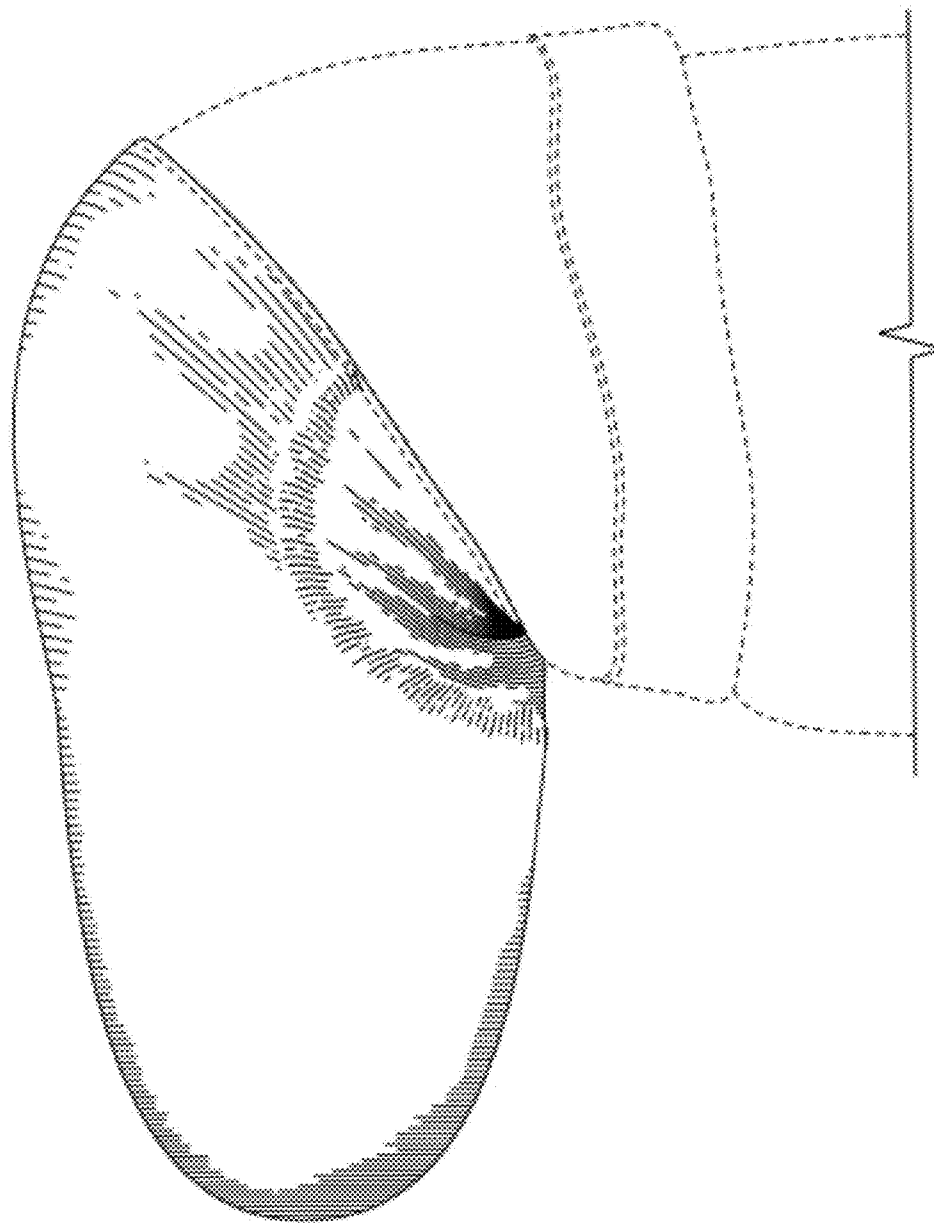


FIG. 8